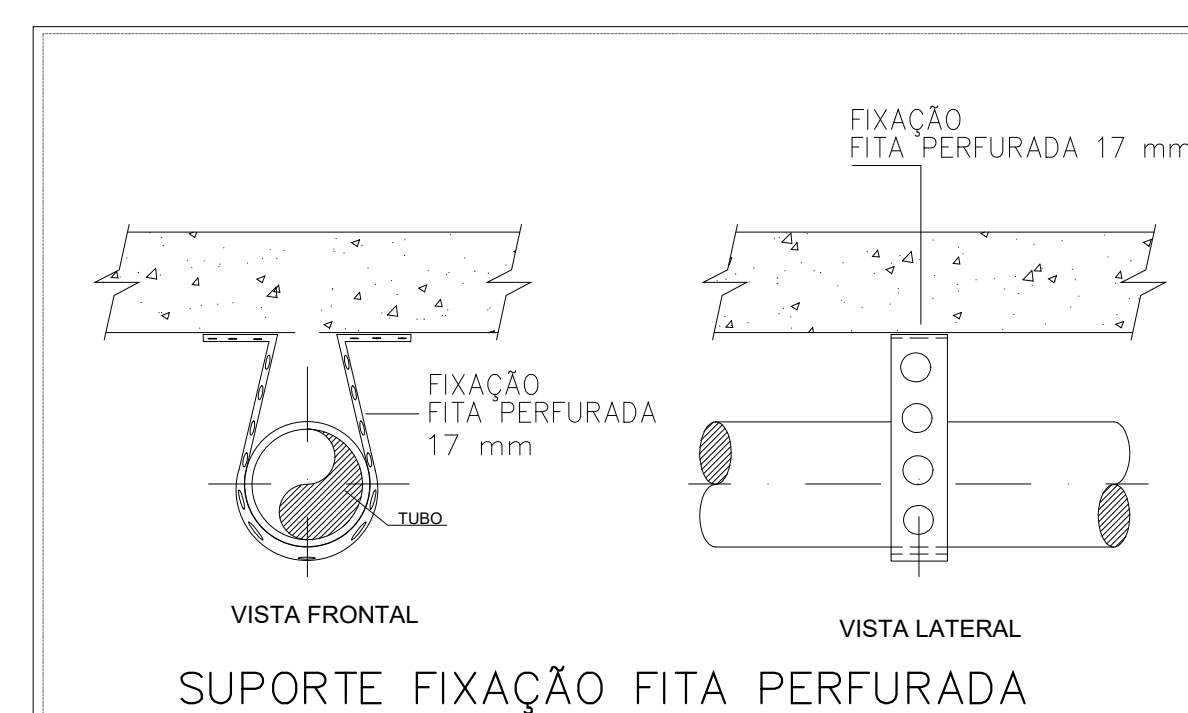
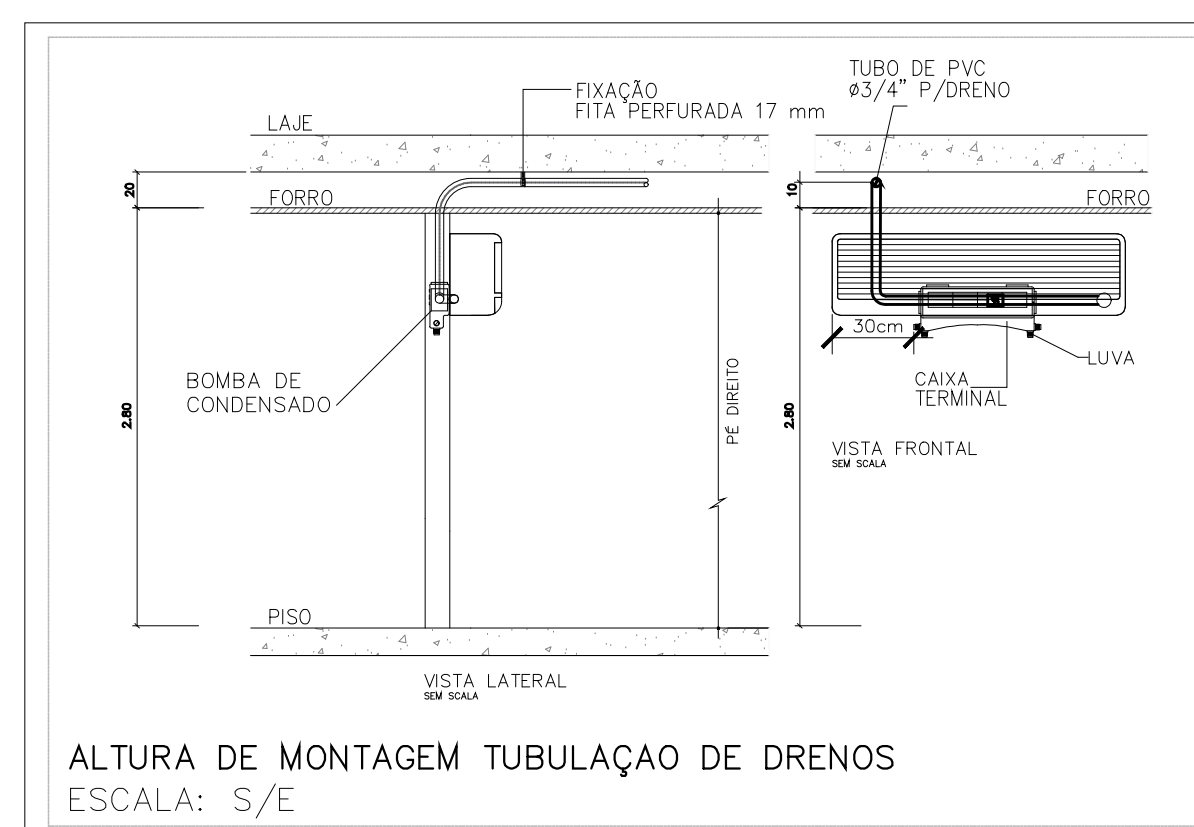
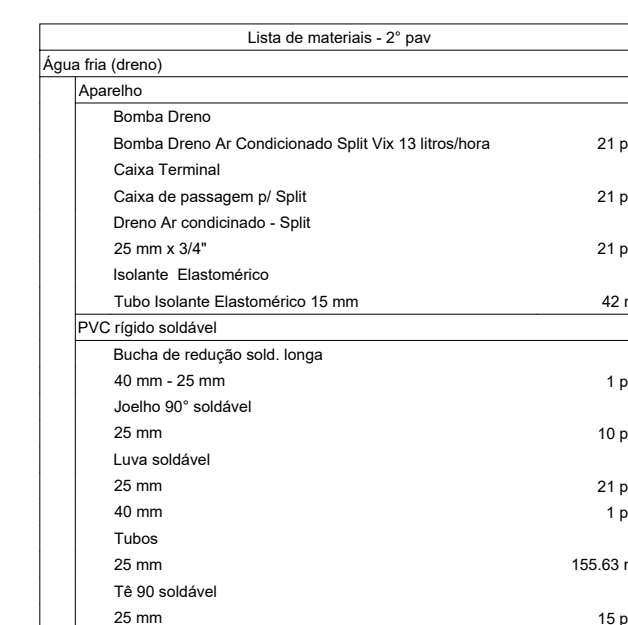




ÁGUA FRIA


- [illegible]



CLIENTE	SESC - DF		SR	DISTRITO FEDERAL
UNIDADE			CEP	55010-000
	SESC - TAGUATINGA		ART	A EMITIR
END.	SETOR B NORTE OND 12 AREA ESPECIAL 2/3 - TAGUATINGA NORTE - DF		DISCIPLINA	DISSINCRONIZADO
ETAPA	PROJETO EXECUTIVO		FOLHA	18_03/04
TITULO	PROJETO HIDROSSANITARIO PLANTA BAIXA - DRENOS - 2º PAVIMENTO		AFIXADO	
 CBR ENGENHARIA				
CBR Engenharia   Porto Alegre Rua Washington Luiz, 1118 sala 901 fone: 51.3002.3000 www.cbrengenharia.com.br				

QUADRO DE ÁREAS:		LOCALIZAÇÃO SEM ESCALA:			
		<p>The diagram shows a central vertical corridor flanked by four rooms. Each room contains a small square icon representing a specific area. The rooms are labeled 'negotio' at the top and bottom of each column.</p>	<p>The diagram shows a central vertical corridor flanked by four rooms. Each room contains a small square icon representing a specific area. The rooms are labeled 'negotio' at the top and bottom of each column.</p>	<p>The diagram shows a central vertical corridor flanked by four rooms. Each room contains a small square icon representing a specific area. The rooms are labeled 'negotio' at the top and bottom of each column.</p>	<p>The diagram shows a central vertical corridor flanked by four rooms. Each room contains a small square icon representing a specific area. The rooms are labeled 'negotio' at the top and bottom of each column.</p>

RESPONSÁVEL TÉCNICO:

RESPONSÁVEL TÉCNICO: ENG. PAULO LOECK CREA RS: 35.534	ELABORAÇÃO: ENG. CARLOS CALVACANTE CREA RJ: 2022100496	
COORDENADOR RJ ARQ. THAIS RODRIGUES BARBOSA CAU: A257006-0	DESENHO: ENG. FÁBIO ARAÚJO	



QUADRO DE REVISÃO			
Rev.	Data	Descrição	Elaboração
R01	09/07/2023	REVISÃO	FABIO ARAUJO
R00	JULHO 2023	IMSSO NCAL	FABIO ARAUJO

DOCUMENTOS DE REFERÊNCIA:

Nome	Data	Descrição